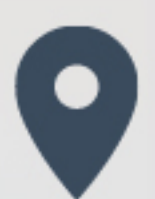




ACCESSORY COLLECTION

Designed for Living Engineered to Last



6 Morgan Creek, Larch Nook,
Zwartkop Ext. 4, Centurion



082 477 6505



www.masterfireplaces.co.za

FLUE PIPES



Mild Steel, Stainless Steel & Galvanised

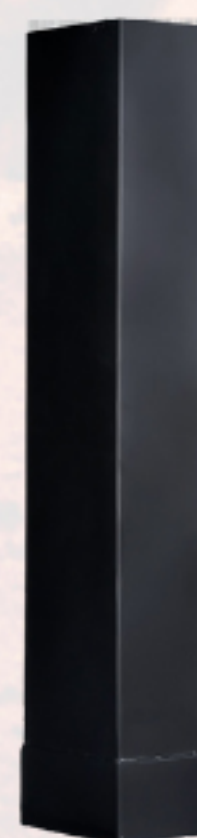
What is a flue pipe?

A flue pipe functions as a part that directs exhaust gases from household heating devices outside. Usually crafted from metal, it needs to be built using materials that can endure high temperatures. The size of the flue pipe is essential since it impacts the efficiency of gas discharge.

MOLDED FLUE LINER (mm)			RECTANGULAR FLUE (mm)			ROUND FLUE (mm)	
Width	Width	Length	Width	Width	Length (m)	Ø	Length
200	200	900	200	200	1.8 or 2.4	125	1200
200	300	900	200	300	1.8 or 2.4	150	1200
200	400	900	200	400	1.8 or 2.4	175	1200
300	300	900	300	300	1.8 or 2.4	200	1200
350	500	900	350	500	1.8 or 2.4	225	1200
						250	1200
						275	1200
						300	1200
						325	1200
						350	1200
						375	1200
						475	1200



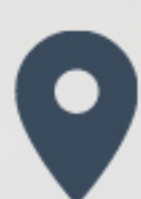
Molded flue liner



Rectangular flue



Round flue



6 Morgan Creek, Larch Nook,
Zwartkop Ext. 4, Centurion



082 477 6505



www.masterfireplaces.co.za

45 DEGREE BENDS



Mild Steel, Stainless Steel & Galvanised

What is a bend?

A bend is connected to a flue pipe to direct exhaust gases from household heating devices, through a wall instead of a ceiling, outside. Usually crafted from metal, it needs to be built using materials that can endure high temperatures. The size of the flue pipe is essential since it impacts the efficiency of gas discharge.

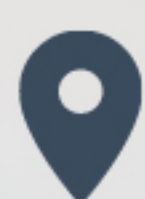
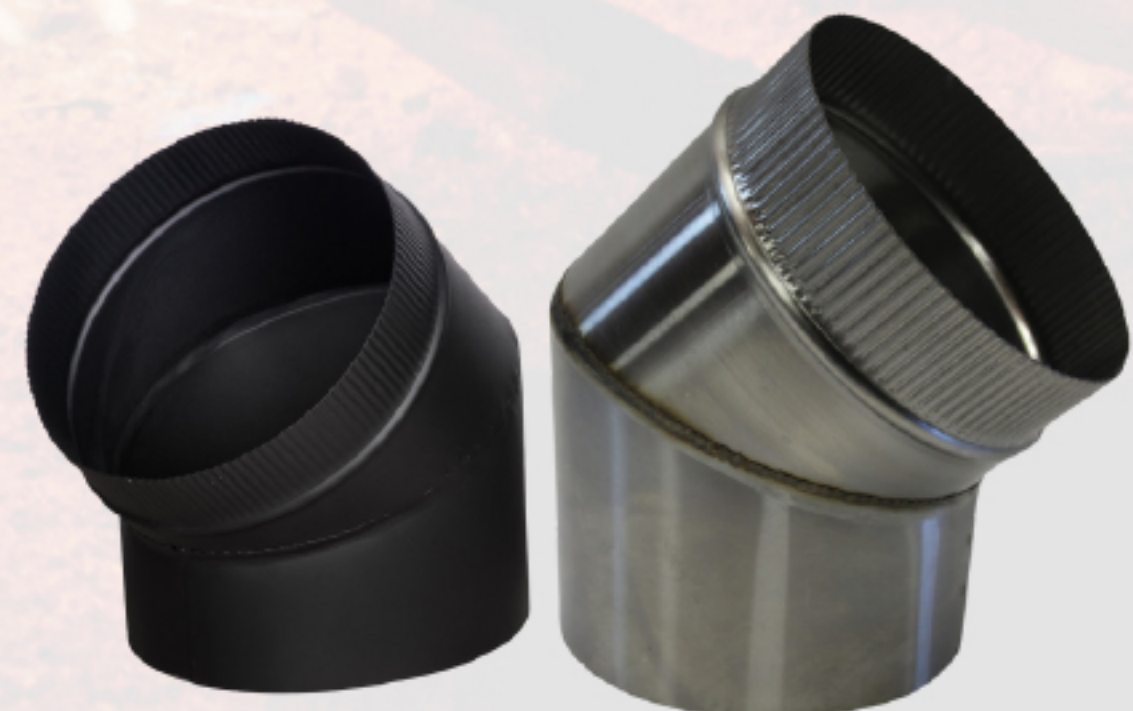
A 45 degree bend is typically installed on your first length of flue pipe.

RECTANGULAR BEND (mm)			ROUND BEND (mm)	
Width	Width	Angle	Ø	Angle
200	200	45 degree	125	45 degree
200	300	45 degree	150	45 degree
200	400	45 degree	175	45 degree
300	300	45 degree	200	45 degree
350	500	45 degree	225	45 degree
			250	45 degree
			275	45 degree
			300	45 degree
			325	45 degree
			350	45 degree
			375	45 degree
			475	45 degree

Rectangular 45 degree bends



Round 45 degree bends



6 Morgan Creek, Larch Nook,
Zwartkop Ext. 4, Centurion



082 477 6505



www.masterfireplaces.co.za

COWLS



Mild Steel, Stainless Steel & Galvanised

What is a Cowl?

A chimney cowl is a hood-shaped covering that sits over the opening of your chimney. It is generally fitted to the top of the chimney or flue pipe and helps to increase the draft of the chimney, prevent downdraft, prevent the elements from entering the chimney, and prevent birds or squirrels from nesting in the chimney cavity.

TURBO COWL		FIXED COWL		ROTATING COWL		STORM COWL	CHINESE COWL
Width	Width	Width	Width	Width	Width	Ø	Ø
200	200	200	200	200	200	125	125
200	300	200	300	200	300	150	150
200	400	200	400	200	400	175	175
300	300	300	300	300	300	200	200
350	500	350	500	350	500	225	225
BASE FLARES OUT 100MM ON EITHER SIDE						250	250
ROUND BASE IS OPTIONAL FOR ABOVE COWLS						275	275
						300	300
						325	325
						350	350
						375	375
						475	475



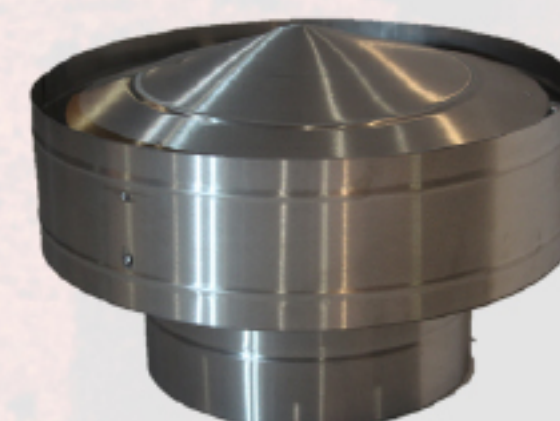
Turbo cowl



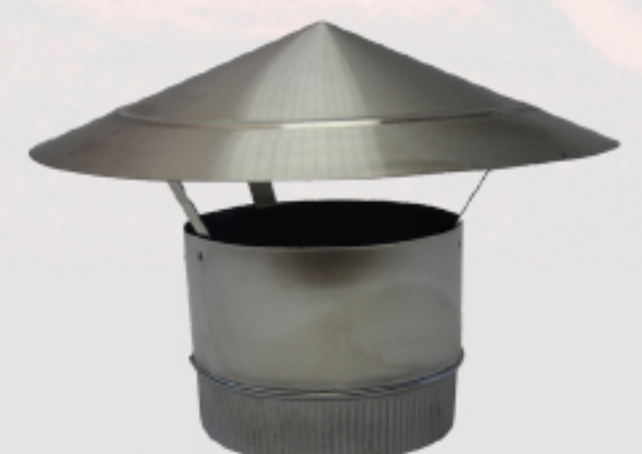
Fixed cowl



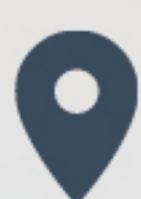
Rotating cowl



Storm cowl



Chinese cowl



6 Morgan Creek, Larch Nook,
Zwartkop Ext. 4, Centurion



082 477 6505



www.masterfireplaces.co.za

ESCUTCHEON PLATE



Mild Steel, Stainless Steel & Galvanised

What is a Escutcheon?

An escutcheon plate is a decorative metal plate used for concealing holes in walls or ceilings.

ESC. PLATE
Ø
125
150
175
200
225
250
275
300
325
350
375
475



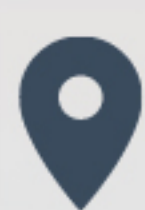
6 Morgan Creek, Larch Nook,
Zwartkop Ext. 4, Centurion



082 477 6505



www.masterfireplaces.co.za



6 Morgan Creek, Larch Nook,
Zwartkop Ext. 4, Centurion



082 477 6505



www.masterfireplaces.co.za